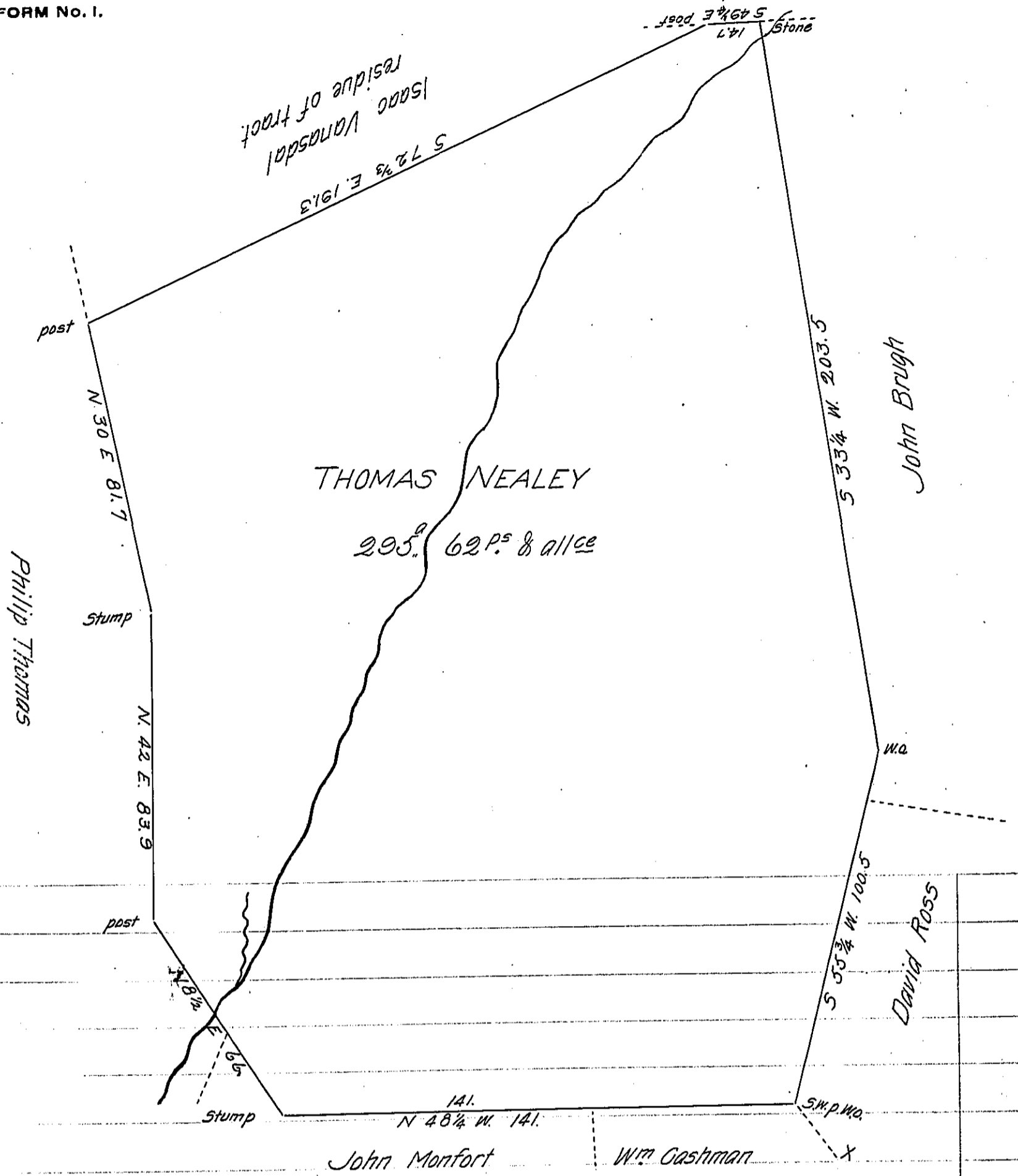


FORM No. 1.



Situate in Strabane Township Adams County. Surveyed March 30th 1810 Being part of a larger tract Surveyed same day in pursuance of a warrant granted to Thomas Nealey for 150^a dated March 7th 1753. Containing 305^a 25 P^s & all ce the above part Surveyed for Philip Thomas Containing two hundred and ninety five acres Sixty two perches & all ce

To Andrew Porter Esq^r By Sam^l Sloan D.S.
Surveyor General

IN TESTIMONY that the above is a copy of the original remaining on file in the Department of Internal Affairs of Pennsylvania, made conformably to an Act of Assembly approved the 16th day of February, 1833, I have hereunto set my Hand and caused the Seal of said Department to be affixed at Harrisburg, this Seventeenth day of April 1906.

Isaac R. Brown
Secretary of Internal Affairs.